

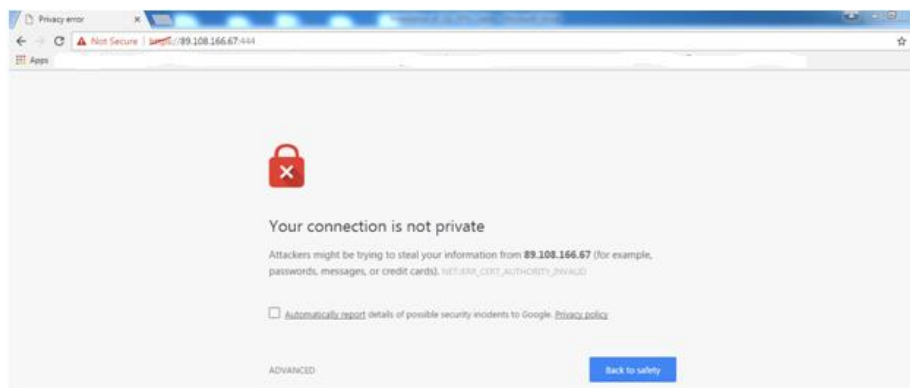
## How to install the secured network application – SSLVPN Client

### Before the Archaeological objects declaration process

#### Step1:

Open google chrome and enter the following address: <https://212.40.130.187:444>

A dialog box will appear with the following title : “Your connection is not private”



#### Step2:

**click on ADVANCED**

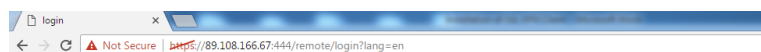
#### Step3:

The dialog box will stretch down with the end line indicating the following :

Proceed to 212.40.130.187 (unsafe)

**Click on it**

A new dialog box will appear, requesting a Name and a password



Please Login	
Name:	<input type="text" value="user1"/>
Password:	<input type="password" value="*****"/>
<input type="button" value="Login"/>	

## Step 4:

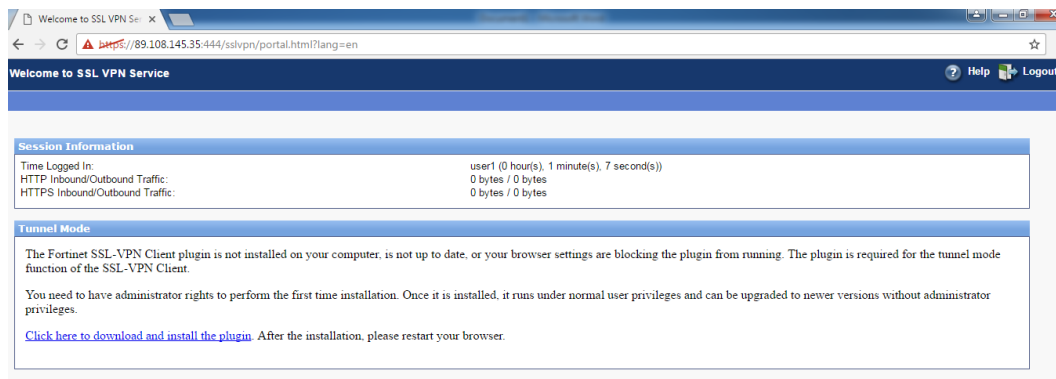
Enter the following Name and Password

Name = user1

Password = qdduser1

**Once entered, press the Login button**

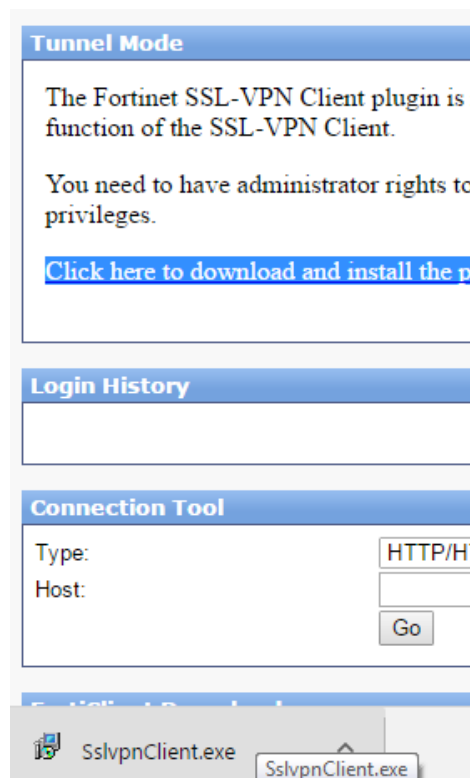
The following dialog box will appear



## Step 5:

wait for data to appear in **Tunnel Mode**

**Then click on** [Click here to download and install the plugin.](#)



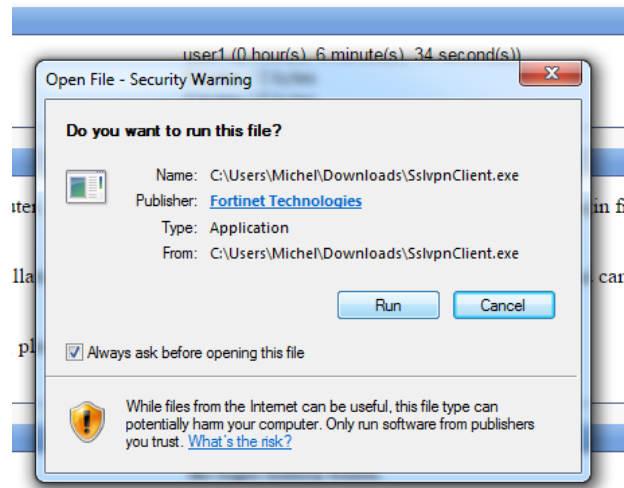
## Step 6:

Wait for SslvpnClient.exe to finish downloading then **click on it** (the icon of the download will appear in the left bottom side of your browser window)

## Step 7:

A new dialog box will appear, asking you if you want to run the file.

**Press the Run button**



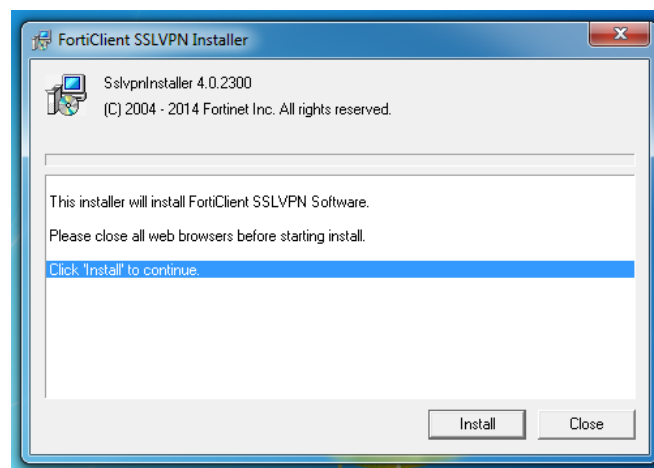
A new dialog box will appear, informing you that it will install the FortiClient SSLVPN software.

Note: in some computers, a dialog box with “Run as administrator” button will appear. You should click this one to continue the installation)

Follow the installation procedures by clicking yes on the new dialog box.

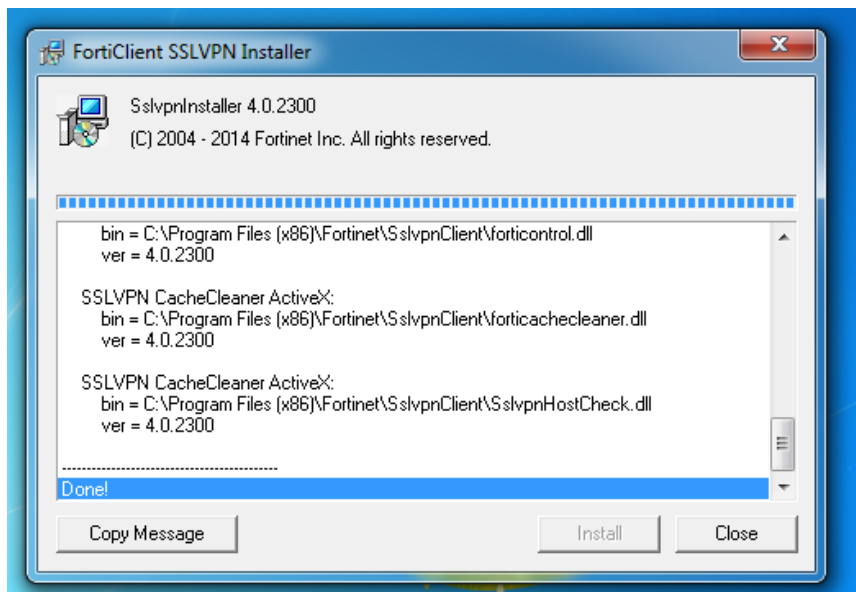
## Step 8:

Logout/close google chrome then **click on install** on the dialog box that will appear on your screen.



## Step 9:

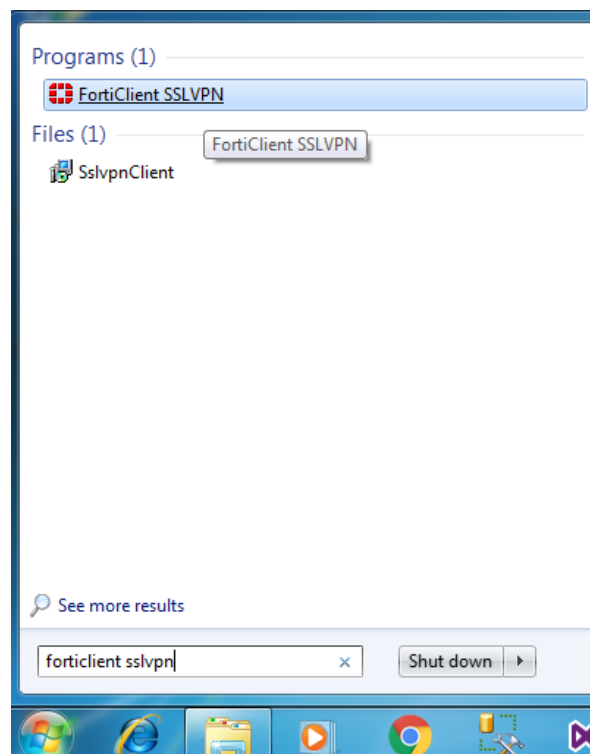
The software will install itself as per the following dialog box.



When the installation is done **press the "Close" button.**

## Step 10:

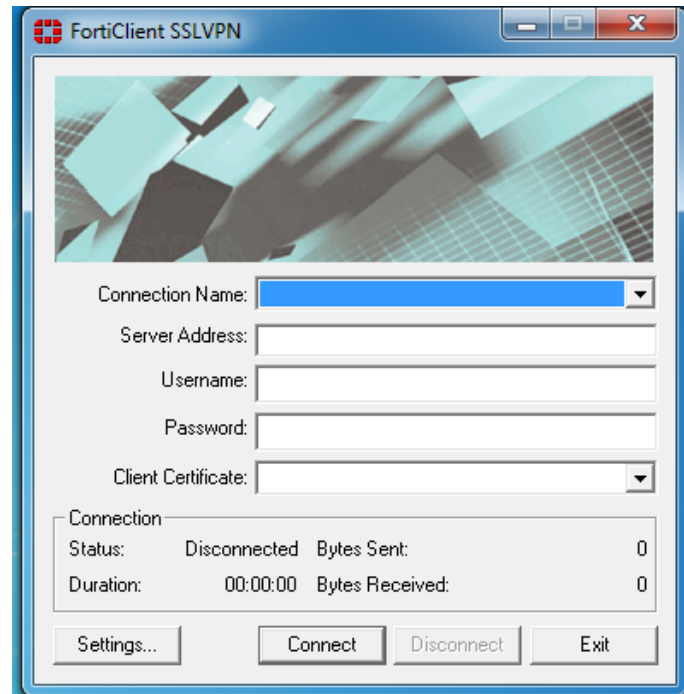
Open FortiClient SSLVPN by clicking on the windows button and typing the name in the search box as shown below (Note: in some computers the FortiClient SSLVPN icon can appear above the search box. In this case you directly click on it)



## Step 11:

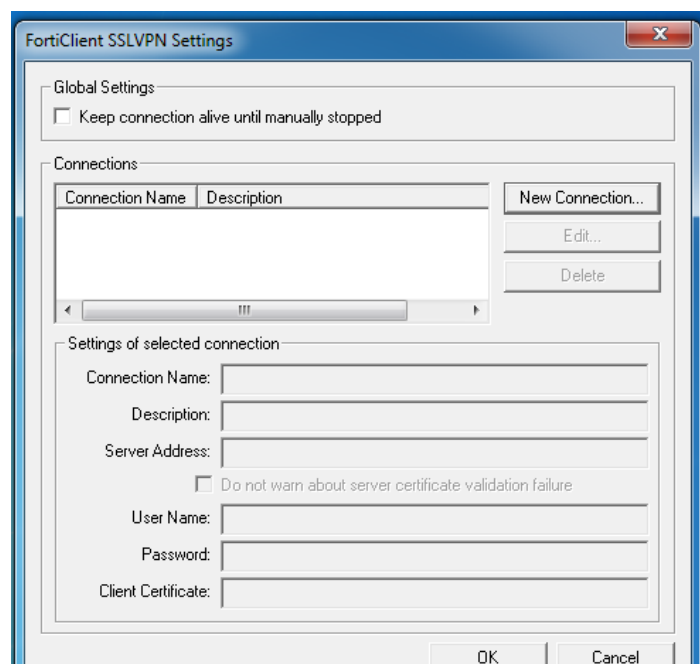
A new dialog box will appear.

**Click on the “Settings” button**



A new dialog box will appear

**Click on the “New Connection” button**



## Step 12:

Fill in the following information:

Connection Name: Archaeologicalobjectsdeclaration

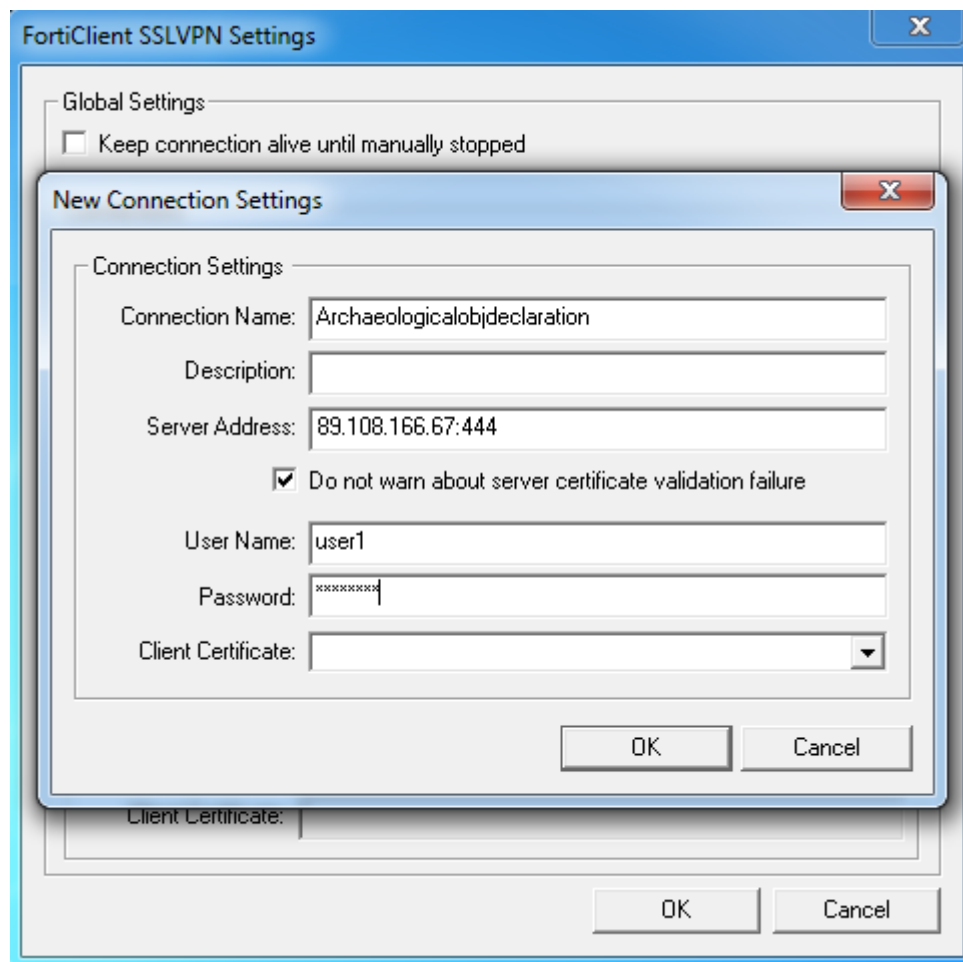
Server Address: 212.40.130.187:444

Leave the Description field empty and tick the box in front of “Do not warn about ...”

User Name: user1

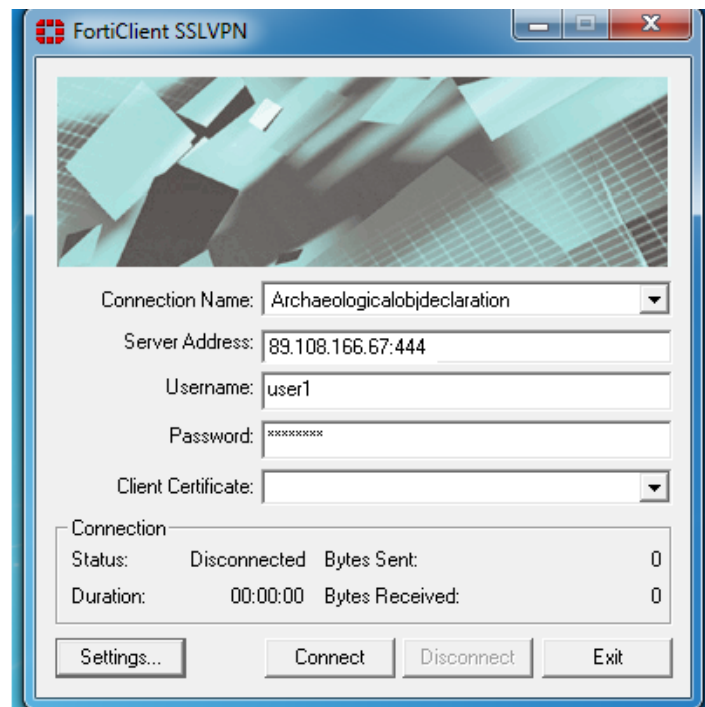
Password: qdduser1

After you are done **press OK ... then OK again**

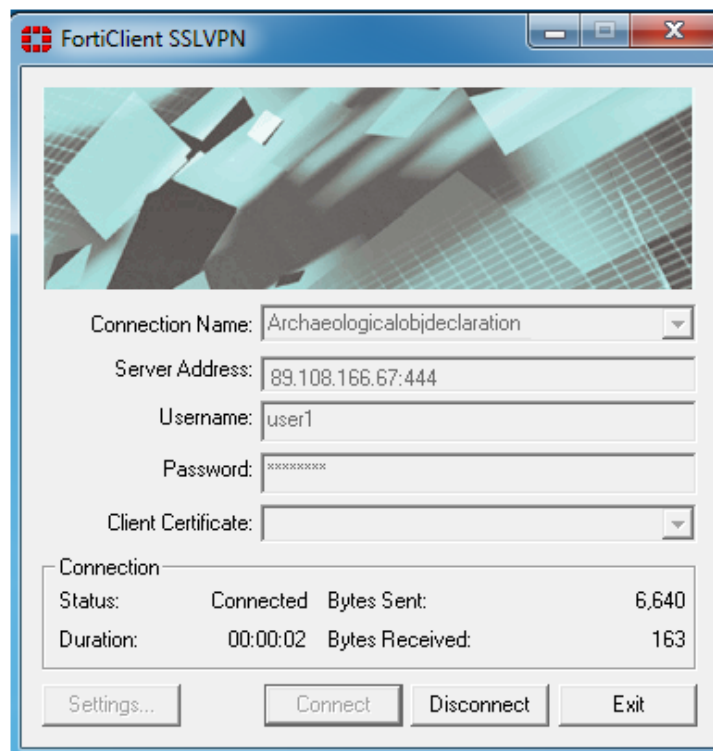


### Step 13:

Press the “Connect” button



When the connection is established the dialogue box will change in appearance as below. **Do not press disconnect.**



## Step 14:

Open google chrome and enter the following address:

<http://10.212.134.6/Archaeologicalobjectsdeclaration/SignIn.aspx>

You are now in the declaration zone.

You should first create your own account in order to begin the declaration process.

To create your account press on the red button “إنشاء حساب” and follow the indicated steps as explained in the document **“Registration and Personal Data. Steps to follow before the declaration”**.

The screenshot shows a web browser window with the address bar displaying [10.212.134.6/Archaeologicalobjectsdeclaration/SignIn.aspx](http://10.212.134.6/Archaeologicalobjectsdeclaration/SignIn.aspx). The page features the logo of the Ministry of Culture (Ministère de la Culture) and the title "تصريح بحيازة آثار قديمة منقولة" (Declaration of possession of ancient movable objects). Below the title, it says "عملاً بالمرسوم رقم ٣٠٦٥" (In accordance with Decree No. 3065) and "تاريخ ٢٠١٦/٣/١٢" (Date 2016/3/12). The login section includes a blue button labeled "أدخل البريد الإلكتروني وكلمة السر" (Enter email and password), followed by input fields for "البريد الإلكتروني" (Email) and "كلمة السر" (Password). At the bottom, there are two buttons: a red one labeled "إنشاء حساب" (Create account) and a green one labeled "تسجيل الدخول" (Login). A link "هل نسيت كلمة السر؟" (Forgot your password?) is also present.